

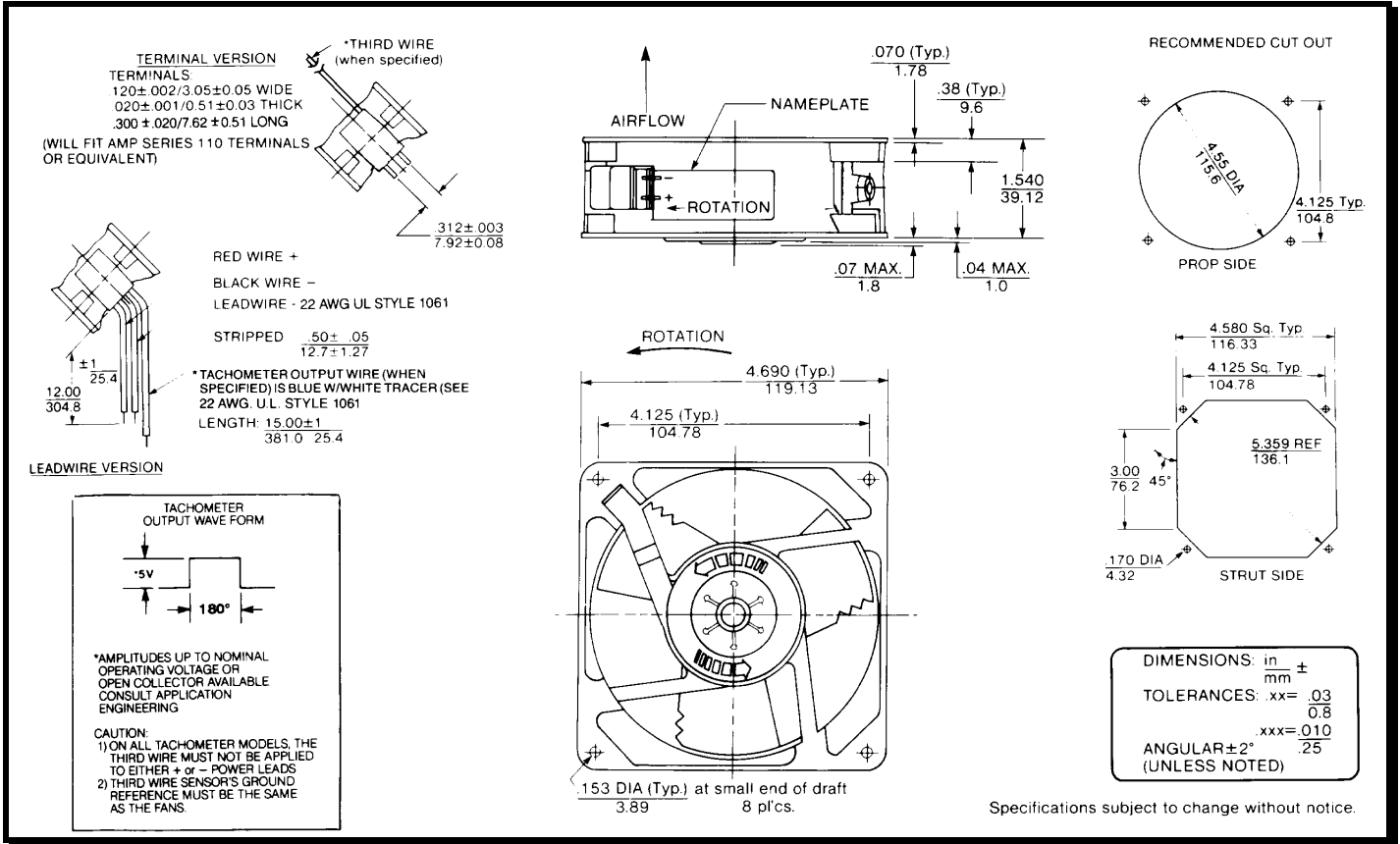
# SPECIFICATIONS



**Model Number:** MD12B1-E2  
**Part Number:** 19031440A

**Version:** 01  
**February 27, 2024**

## Mechanical Drawing:



Specifications subject to change without notice.

## Motor:

Nominal Voltage = 12 vdc  
 Operating Voltage Range = 6 - 14vdc  
 Nominal Running Current = 0.6 amps  
 Locked Rotor Current = 1.650 amps  
 Running Power = 7.2 watts  
 Average Speed = 3330 rpm  
 Bearings = Ball  
 Air Flow = 113 CFM  
 Acoustic = 51.4 dBA

## Construction:

Venturi: Die-Cast Aluminum, Black  
 Propeller: Plastic, Black, UL 94V-0

## Life Expectancy:

This fan is designed for continuous duty life of 55,000 hours at 70°C.

## Additional Features:

Brushless DC Motor  
 Electronic Locked Rotor Protection  
 Automatic Restart Capability  
 Polarity Protected  
 Operating Temperature -10°C to 70°C  
 Storage Temperature -40°C to 85°C  
 Environmental Protection Type 2

## Termination:

12" Lead wires, AWG 22, UL 1061  
 Red - Fan Power (+)  
 Black - Fan Ground (-)

## Agency Approvals:

UL, CUL, CE

PQ Curve:

